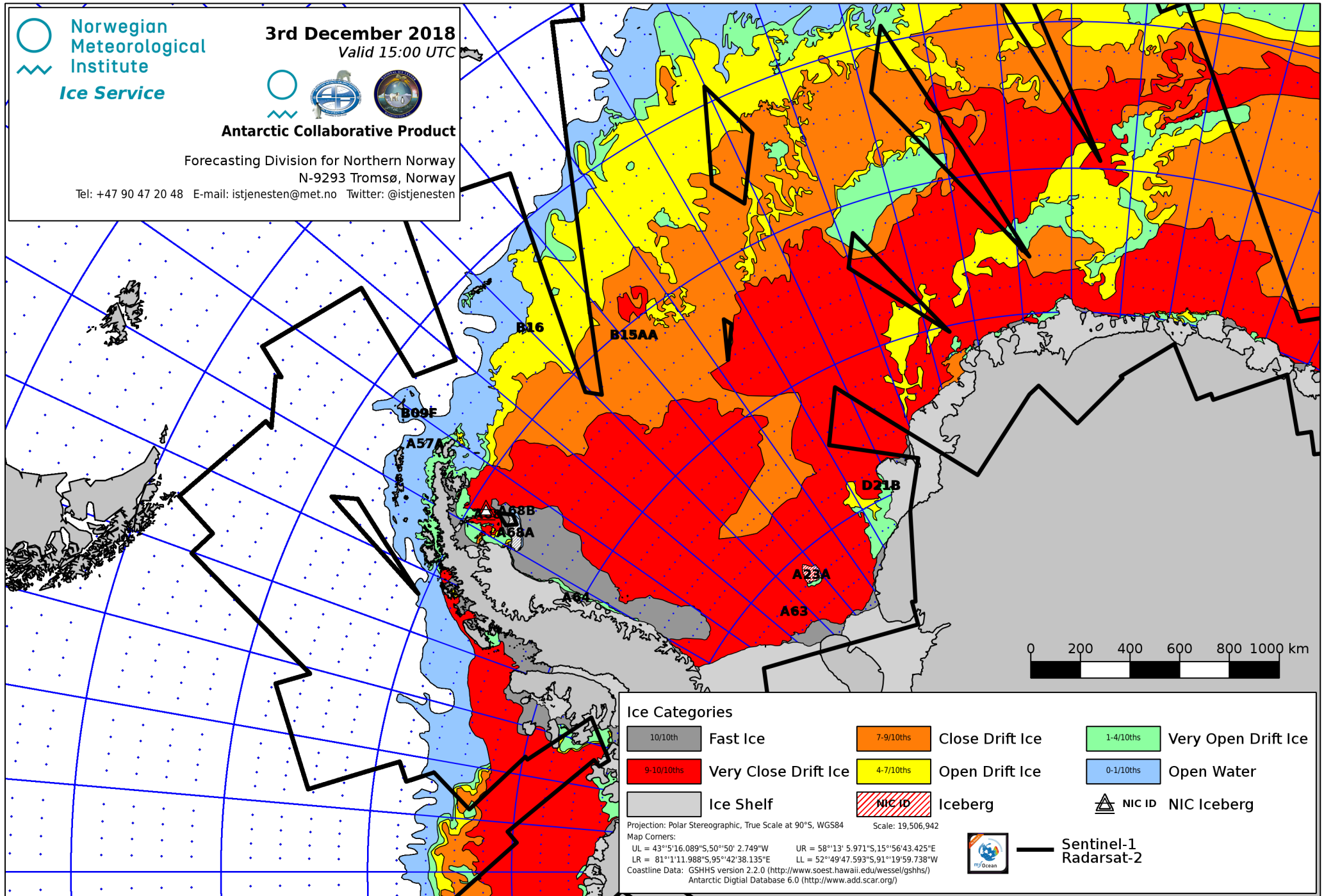




**Antarctic Collaborative Product**

Forecasting Division for Northern Norway  
 N-9293 Tromsø, Norway

Tel: +47 90 47 20 48 E-mail: [istjenesten@met.no](mailto:istjenesten@met.no) Twitter: @istjenesten



**Ice Categories**

 10/10th	Fast Ice	 7-9/10ths	Close Drift Ice	 1-4/10ths	Very Open Drift Ice
 9-10/10ths	Very Close Drift Ice	 4-7/10ths	Open Drift Ice	 0-1/10ths	Open Water
	Ice Shelf	 NIC ID	Iceberg		NIC ID NIC Iceberg

Projection: Polar Stereographic, True Scale at 90°S, WGS84 Scale: 19,506,942  
 Map Corners:  
 UL = 43°5'16.089"S, 50°50' 2.749"W UR = 58°13' 5.971"S, 15°56'43.425"E  
 LR = 81°1'11.988"S, 95°42'38.135"E LL = 52°49'47.593"S, 91°19'59.738"W  
 Coastline Data: GSHHS version 2.2.0 (<http://www.soest.hawaii.edu/wessel/gshhs/>)  
 Antarctic Digital Database 6.0 (<http://www.add.scar.org/>)




 Sentinel-1  
 Radarsat-2