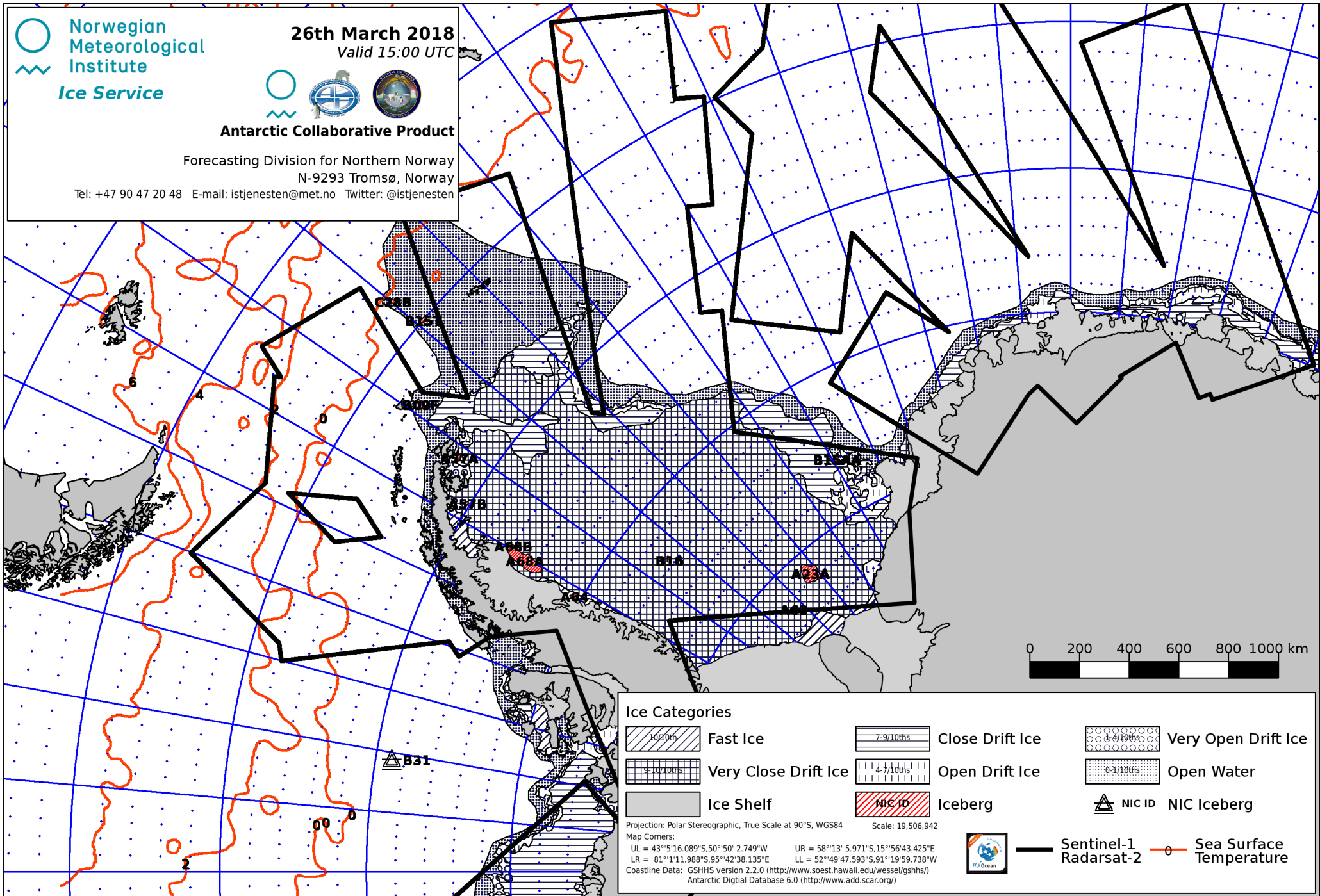




**Antarctic Collaborative Product**

Forecasting Division for Northern Norway  
 N-9293 Tromsø, Norway

Tel: +47 90 47 20 48 E-mail: istjenesten@met.no Twitter: @istjenesten





**Ice Categories**

|   |                      |   |                 |   |                     |
|---|----------------------|---|-----------------|---|---------------------|
|  | Fast Ice             |  | Close Drift Ice |  | Very Open Drift Ice |
|  | Very Close Drift Ice |  | Open Drift Ice  |  | Open Water          |
|  | Ice Shelf            |  | Iceberg         |  | NIC Iceberg         |

Projection: Polar Stereographic, True Scale at 90°S, WGS84 Scale: 19,506,942  
 Map Corners:  
 UL = 43°5'16.089"S, 50°50' 2.749"W UR = 58°13' 5.971"S, 15°56'43.425"E  
 LR = 81°1'11.988"S, 95°42'38.135"E LL = 52°49'47.593"S, 91°19'59.738"W  
 Coastline Data: GSHHS version 2.2.0 (<http://www.soest.hawaii.edu/wessel/gshhs/>)  
 Antarctic Digital Database 6.0 (<http://www.add.scar.org/>)



 Sentinel-1 Radarsat-2  
 Sea Surface Temperature