

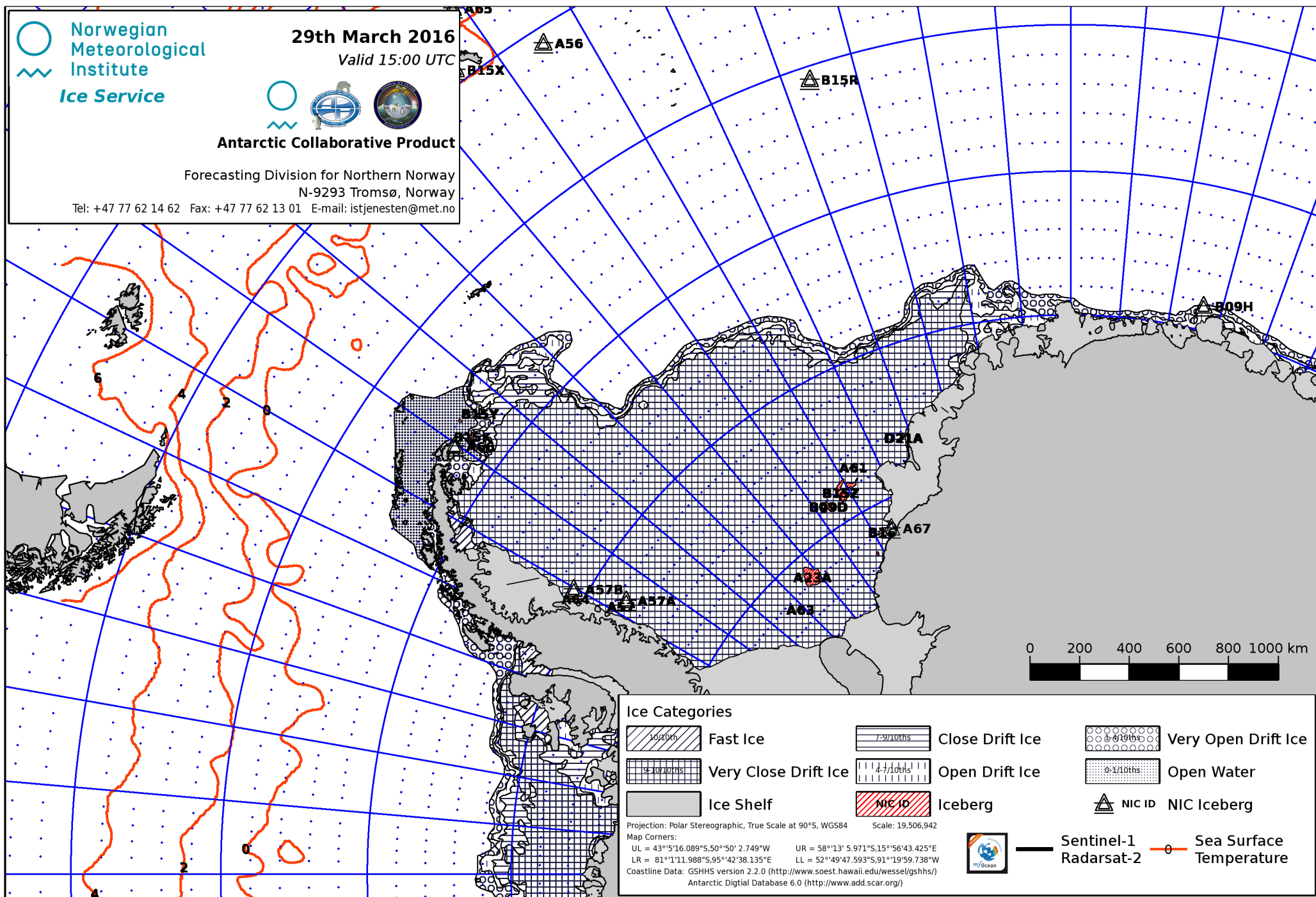
29th March 2016

Valid 15:00 UTC

Antarctic Collaborative Product

Forecasting Division for Northern Norway
N-9293 Tromsø, Norway



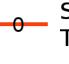
Tel: +47 77 62 14 62 Fax: +47 77 62 13 01 E-mail: istjenesten@met.no



Ice Categories

-  Fast Ice
-  Very Close Drift Ice
-  Ice Shelf
-  Close Drift Ice
-  Open Drift Ice
-  Iceberg
-  Very Open Drift Ice
-  Open Water
-  NIC ID NIC Iceberg

Projection: Polar Stereographic, True Scale at 90°S, WGS84 Scale: 19,506,942
 Map Corners:
 UL = 43°5'16.089"S, 50°50' 2.749"W UR = 58°13' 5.971"S, 15°56'43.425"E
 LR = 81°1'11.988"S, 95°42'38.135"E LL = 52°49'47.593"S, 91°19'59.738"W
 Coastline Data: GSHHS version 2.2.0 (http://www.soest.hawaii.edu/wesse/gshhs/)
 Antarctic Digital Database 6.0 (http://www.add.scar.org/)

 Sentinel-1
 Radarsat-2
 Sea Surface Temperature