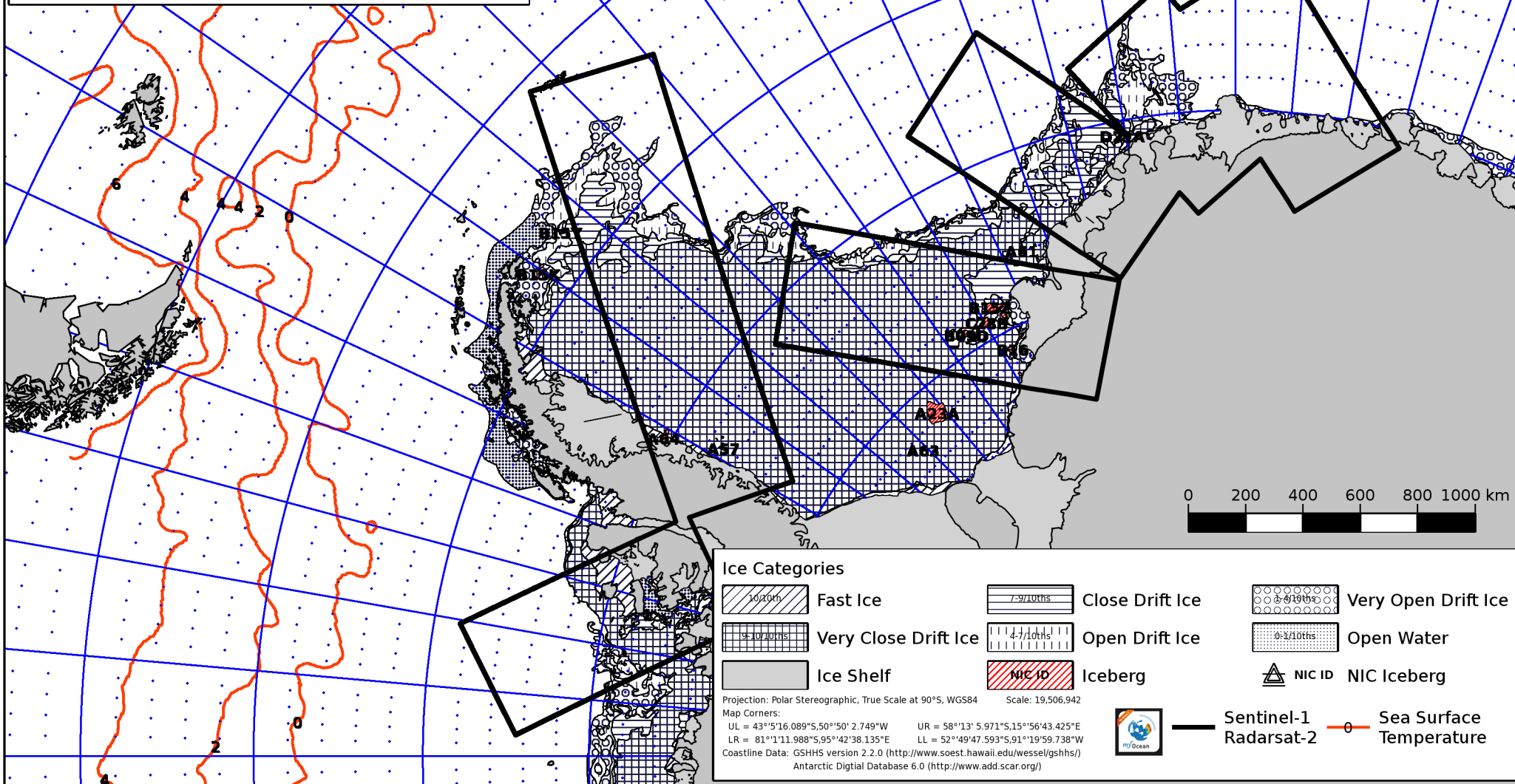




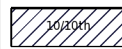
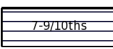
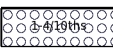
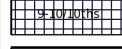
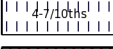
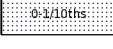
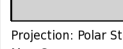
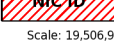
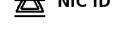
Antarctic Collaborative Product

Forecasting Division for Northern Norway
 N-9293 Tromsø, Norway

Tel: +47 77 62 14 62 Fax: +47 77 62 13 01 E-mail: istjenesten@met.no



Ice Categories

- | | | | | | |
|---|----------------------|---|-----------------|---|---------------------|
|  | Fast Ice |  | Close Drift Ice |  | Very Open Drift Ice |
|  | Very Close Drift Ice |  | Open Drift Ice |  | Open Water |
|  | Ice Shelf |  | Iceberg |  | NIC ID NIC Iceberg |

Projection: Polar Stereographic, True Scale at 90°S, WGS84 Scale: 19,506,942
 Map Corners:
 UL = 43°5'16.089"S, 50°50' 2.749"W UR = 58°13' 5.971"S, 15°56'43.425"E
 LR = 81°1'11.988"S, 95°42'38.135"E LL = 52°49'47.593"S, 91°19'59.738"W
 Coastline Data: GSHHS version 2.2.0 (<http://www.soest.hawaii.edu/wesse/gshhs/>)
 Antarctic Digital Database 6.0 (<http://www.add.scar.org/>)



 Sentinel-1
 Radarsat-2  Sea Surface Temperature